

Walk-in Stability Chamber(Constant Temperature&Humidity Chamber)

I、Performance Index

- 1、 Reference Standard: GB/T 10586-2006 Humid heat test chamber technical condition, JJF1101-2019 Environmental test equipment temperature, humidity parameters calibration specifications;
- 2、 Temperature Range: 20 ~ 45°C, Temperature Fluctuation $\leq \pm 0.5^\circ\text{C}$, Temperature Deviation $\leq \pm 1.0^\circ\text{C}$;
- 3、 Humidity Range: 40 ~ 80%RH, Humidity Deviation $\leq \pm 3.0\%RH$ (Customizable Humidity Range: 20 ~ 80%RH) ;
- 4、 Test Points Optional: 25°C /60%RH、 30°C /65%RH (Low Humidity:40°C /25%RH、 25°C /40%RH) ;
- 5、 Low Temperature Laboratory: The cool storage can be customized $\leq 20^\circ\text{C}$ and 2 ~ 8°C cold storage.(Temperature Fluctuation $\leq \pm 1.0^\circ\text{C}$, Temperature Deviation $\leq \pm 2.0^\circ\text{C}$).

II、 Structural features:

- 1、 Structure system: New air duct system design to ensure the uniformity of indoor temperature and humidity, the inner wall and air duct plate material is stainless steel 304, the bottom full of stainless, Steel 304 patterned anti-skid plate, with hollow tempered glass observation window, lighting, door heating;
- 2、 Refrigeration System: Original imported refrigeration compressor unit with backup system;
- 3、 Control System: Programmable color touch screen controller, With three-level user rights, Audit tracking function;
- 4、 Three Level Authority: Adopt the user name and password to log in. Different user names have different permissions at least three levels or above;
- 5、 Audit tracking function: The control system is equipped with historical alarm records and operation records, so that users can clearly grasp the operating status of the equipment, and supports the export of the equipment in unchangeable file format using a USB stick.
- 6、 Humidity control: Imported capacitive humidity sensor, high precision, low drift, long life, maintenance-free;
- 7、 Data management : Equipped with a pin-type micro printer and electronic data storage;
- 8、 Alarm system: On-site beeping alarm;
- 9、 Safety device: The door is equipped with key safety lock and anti-reverse lock function、 Internal emergency ring function to ensure the safety of users, With a variety of safety protection measures and fault alarm;
- 10、 Daily monitoring: Configure at least two daily temperature and humidity monitoring points, according to the verification of the lowest and temperature, humidity;
- 11、 **Optional:** Web server system for integrated data management of all devices and compliance with FDA 21CFR PART II regulations;
- 12、 **Optional:** Temperature-humidity deviation, sudden power failure, control by Remote SMS alarm.



Model	Temperature Range (°C)	Humidity Range (RH)	Capacity (L)	Interior Dimensions(mm) W×D×H	External Dimensions(mm) W×D×H	Power (kW)	Remarks
Labonce-8000GS	20 ~ 45	40 ~ 80%	8000	1900×2200×2000	2050×3150×2250	5.0	Customizable Humidity : 20 ~ 80%RH
Labonce-15000GS	20 ~ 45	40 ~ 80%	15000	1900×4000×2000	2050×4950×2250	5.5	
Labonce-20000GS	20 ~ 45	40 ~ 80%	20000	2200×4100×2200	2400×4300×2400	6.0	
Labonce-33000GS	20 ~ 45	40 ~ 80%	33000	2950×5200×2200	3150×5400×2400	6.5	
Labonce-40000GS	20 ~ 45	40 ~ 80%	40000	3600×5200×2200	3800×5400×2400	7.5	
Labonce-60000GS	20 ~ 45	40 ~ 80%	60000	4400×6400×2200	4600×6600×2400	8.5	
Labonce-80000GS	20 ~ 45	40 ~ 80%	80000	5800×6400×2200	6000×6600×2400	10.5	

All indicators on this color page were measured at an ambient temperature of 20~25°C.

Walk-in Stability Chamber--Exterior and interior



◆ 2000GS-8000GS

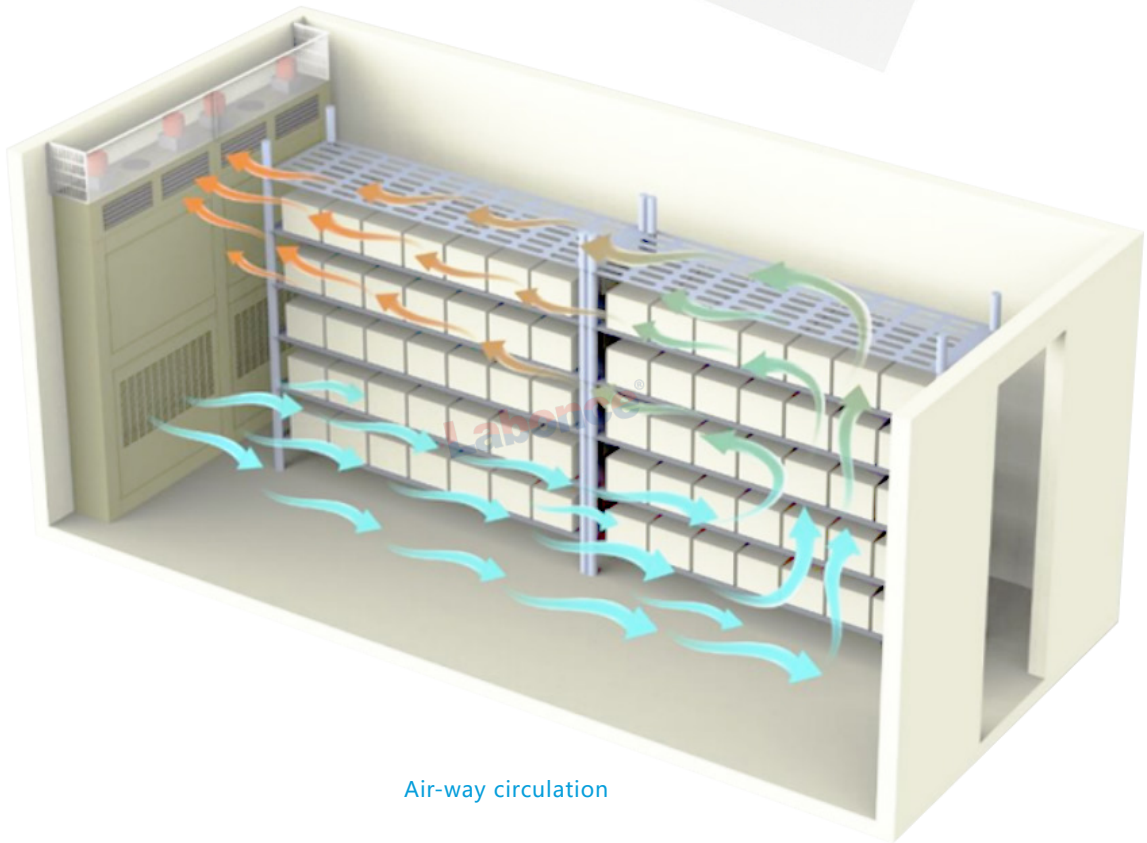
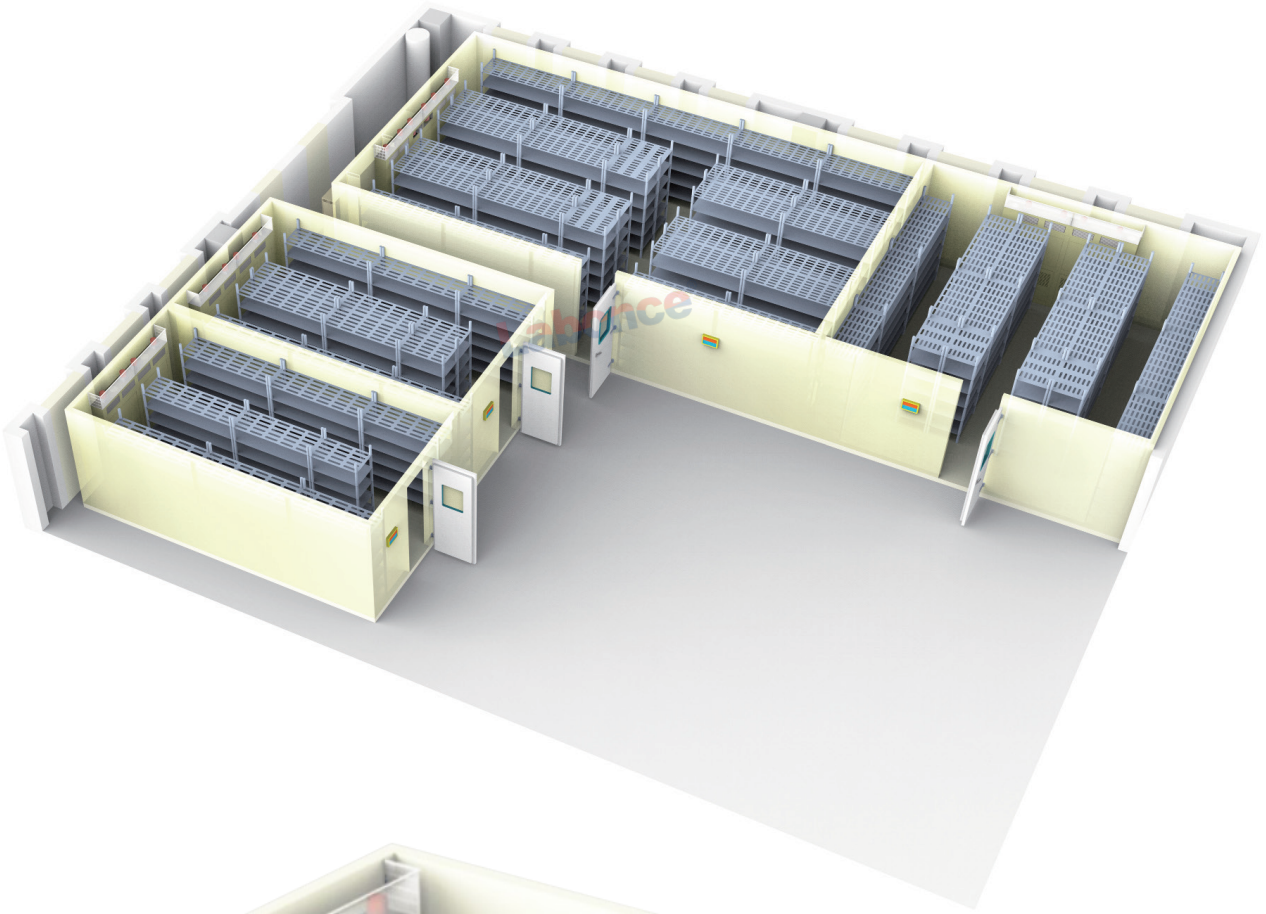


◆ 8000GS-15000GS



◆ Internal shelf

Walk-in Stability Chamber-3D schematic diagram



Air-way circulation

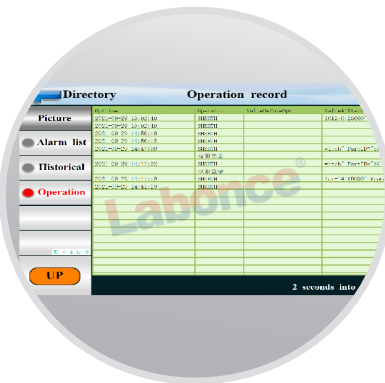
Walk-in Stability Chamber-Monitoring System

The main monitoring interface displays the following data:

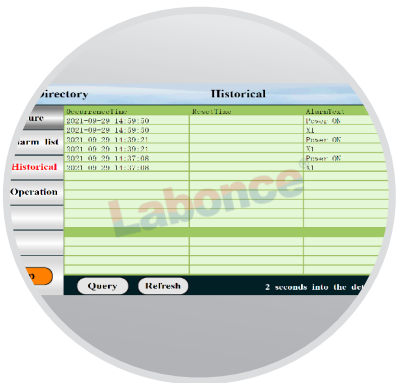
- Directory** (Left Arrow)
- The Constant to stop** (Center Title)
- Monday** (Right Title)
- Temp**: 25.0 °C (PV), 25.0 °C (SV)
- Humi**: 60.1 % (PV), 60.0 % (SV)
- TCH1**: 24.6 °C
- TCH2**: 24.7 °C
- HCH1**: 59.6 %
- HCH2**: 58.7 %
- Bottom Bar**: 2023/06/05 11:21:03, Light, Key, Start



Three Level Authority



Audit trail



Alarm Record

